

## How to convert shadows to spot ink colors and set shadow resolution

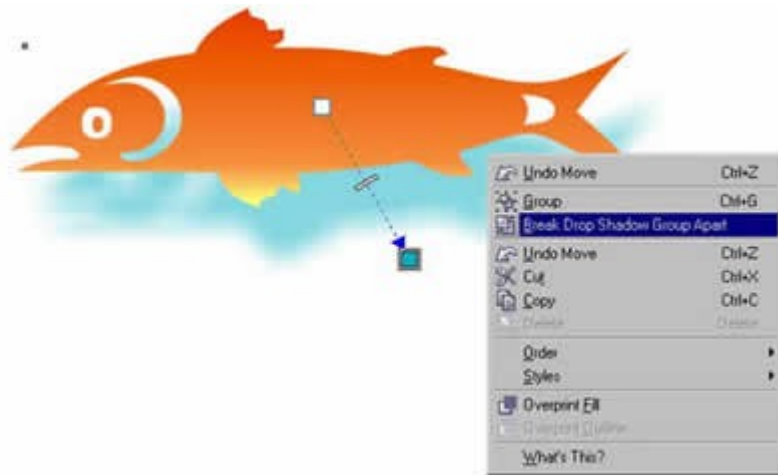
By [Steve Bain](#)

One of the most popular effects in CorelDRAW's tool arsenal is the Interactive Drop Shadow Tool. It enables designers and illustrators to instantly apply the attractive soft, beautiful shadow effects seen in today's professional-quality layouts and drawings. Drop shadow effects are based on bitmap characteristics, which presents two questions many users often end up asking themselves: What color model is my shadow based on? and; *What is the resolution of the bitmap representing my shadow effect?*

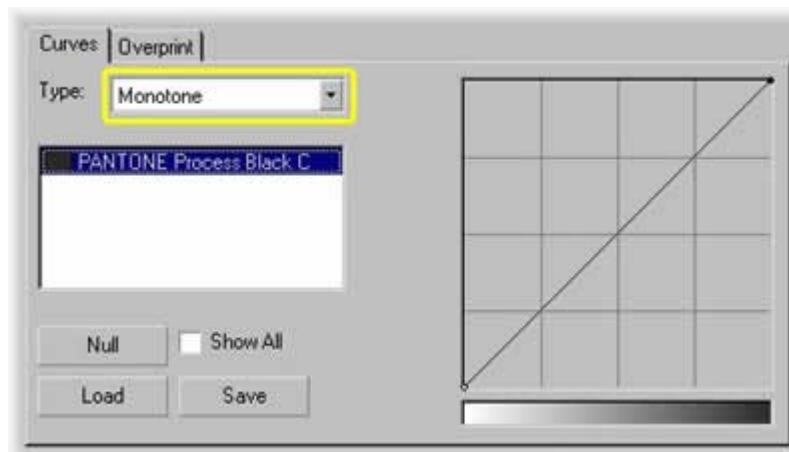
When it comes to applying drop shadow color interactively, you may choose any color you wish, the default color applied to all shadows is based on four color CMYK (cyan, magenta, yellow, and black) inks used in process color printing. If the drawing you're preparing is comprised of spot colors though, and you wish your drop shadow to print only in a specific spot color ink, there is a quick solution. The shadow bitmap can be separated and converted using a simple technique.

To convert the drop shadow to a fixed-palette ink color, follow these brief steps:

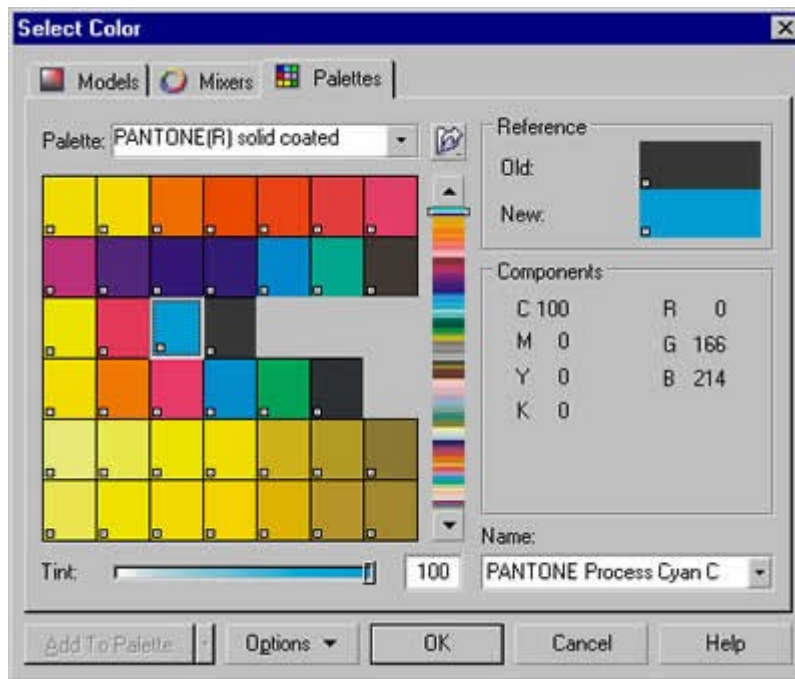
1. If you haven't already done so, finish applying your drop shadow effect using the Interactive Drop Shadow Tool and ensure the shadow is just the way you need it to appear before proceeding.
2. With your drop shadow effect in place, right-click the shadow portion itself and choose the Break Drop Shadow Group Apart command from the popup menu. Doing this will break the dynamic link between your original object and the shadow effect.



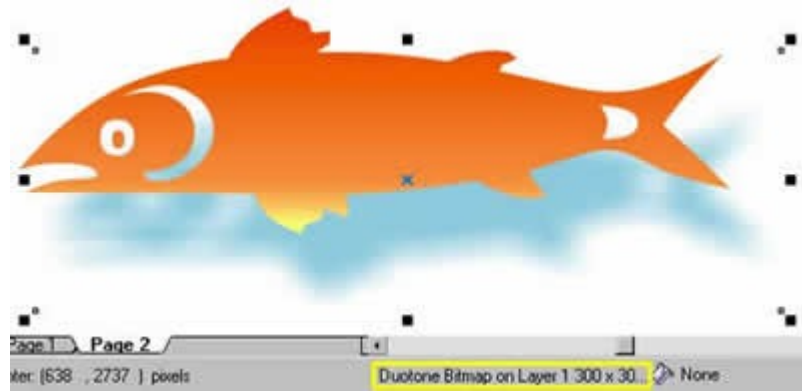
3. Using the Pick Tool, click to select only the shadow bitmap and choose Bitmaps, Mode, Duotone (8-bit). A message "Bitmap Has Color Mask" may appear warning you that are about to eliminate a transparency mask which may be applied to the shadow. If so, click OK to proceed.
4. The Duotone dialog will open with the Curves tab in view, indicating the color type and any currently selected inks. If it isn't already selected, choose Monotone in the Curves tab (shown next).



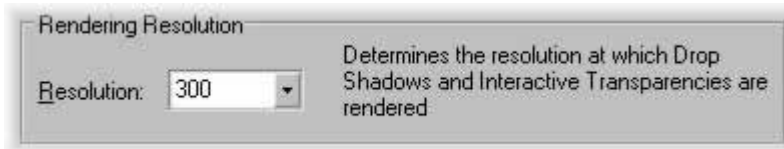
- To change from the current color, double-click the ink color name to open the Select Color dialog. In the Color Select dialog, choose the ink color you would like to use—such as a spot color of ink from one of CorelDRAW 11's Fixed Palette collections. To access these colors, click the Fixed Palette tab in the dialog (as shown next). Click OK to close the dialog and accept your color ink choice.



- After choosing your ink color, you'll be returned to the Duotone dialog. Notice your chosen color is now listed. Click OK to close this dialog and the new spot ink color is applied. Notice your Status Bar now indicates the selected bitmap is a Duotone (as shown next).



The solution to controlling your shadow's bitmap resolution is even quicker than spot ink conversions. By default, all drop shadows are rendered using a resolution setting of 300 dpi (dots per inch), but if you require you may change this value anywhere within a range between 72 and 1,000 dpi using settings in the Options dialog by choosing the Workspace, General page. To access this option, open the Options dialog by choosing Tools, Options (Ctrl+J), click General under the Workspace heading on the left side of the dialog, and change the value in the Resolution box (shown next).



There's something else to keep in mind when changing resolution settings for effects. Changing effects resolution only apply to shadow effects created after the fact, meaning the effects will only apply following changes to the drop shadow resolution. Any shadows already created will remain applied with the previous setting, as shown next) in this magnified view.

